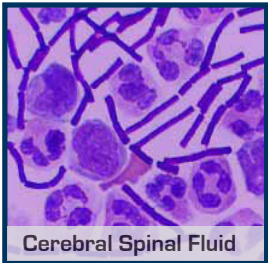


# IT 1-2-3™ Sample Purification Kits

## Information Sheet



Blood



Cerebral Spinal Fluid



Mixed Greens



See reverse side for a complete list of sample types

## Quick and Easy Sample Purification Kits for DNA and RNA Extraction

Our DNA/RNA extraction and purification kits enable extraction of DNA or RNA from pathogens found in food, water, blood and other sources. Each kit contains all of the necessary ingredients for DNA/RNA purification in a simple, complete and convenient format.

All kits contain easy to follow protocols requiring minimal training to reduce the risk of operator error. They have been designed to purify samples for analysis with BioFire Diagnostics' R.A.P.I.D.®, R.A.P.I.D. LT, and JBAIDS detection systems.

### Our purification kits can purify the following samples

Medical	Food Safety	Hazmat	Environmental
Blood Nasal Culture Sputum Gastric Lymph node Pus Stool Cerebral Spinal Fluid Nasopharyngeal Throat	Milk Mixed Greens Ground Beef Tuna	Air in PBS Surface Powder	Air in PBS Soil Water Stool

Idaho Technology is now



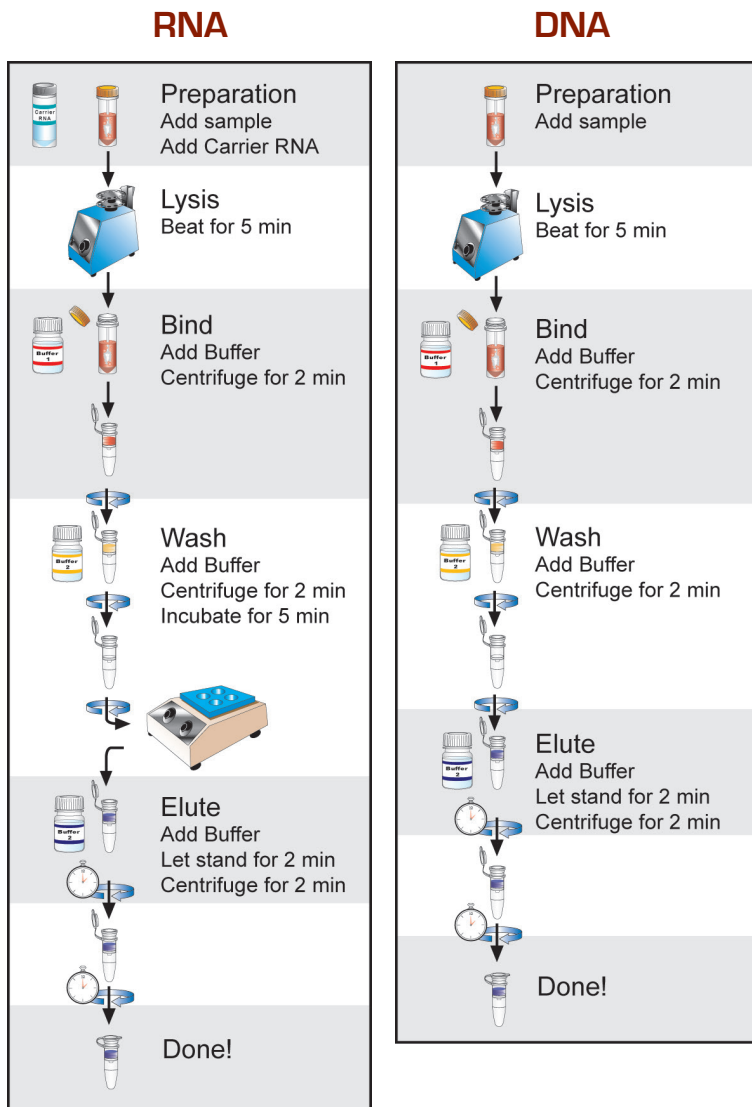
### Purification Kits Available

- **IT 1-2-3 SWIPE** Sample Purification Kit for purification of nasal swab, surface swab, live culture and powder samples
- **IT 1-2-3 FLOW** Sample Purification Kit for purification of blood, air, water, food and body fluid samples
- **IT 1-2-3 VIBE** Sample Purification Kit for purification of sputum samples and RNA from blood and nasal swab samples
- **IT 1-2-3 SCOOP** Sample Purification Kit for purification of stool and soil samples
- **IT 1-2-3 QFLOW<sup>DNA</sup>** Sample Purification Kit for purification of blood, air, water, food and body fluid samples
- **IT 1-2-3 QFLOW<sup>RNA</sup>** Sample Purification Kit for purification of blood, air, water, food and body fluid samples
- **IT 1-2-3 RNA Module** An accessory to the Swipe, Flow, Vibe, and QFLOW<sup>DNA</sup> purification kits and contains items for the purification of RNA 1-2-3 FLOW samples
- **IT 1-2-3 DNA** Sample Purification and Extraction Kit for minimally trained technicians to extract DNA from environmental sources
- **IT 1-2-3 Platinum Path** Sample Purification Kit for magnetic bead purification of biological, environmental, and food samples

## Purifying DNA or RNA

These kits allow you to purify bacteria and viruses from the same sample and include beads and reagent for mechanical lysis of spores. Each kit contains enough material to purify up to forty or fifty samples and do not require time-consuming enrichment steps. There are nine unique protocols to extract DNA/RNA from bacteria and viruses from seventeen sample types. The protocols in this kit employ the steps described below.

1. DNA/RNA is **extracted** from the sample (e.g. cells or spores) through lysis. This is achieved by physical agitation and chemical disruption of the cells with bead-beating.
2. DNA/RNA is **bound** and concentrated on a filter.
3. The DNA/RNA on the filter is **washed** to remove inhibitors
4. The DNA/RNA is **eluted** from the filter.



## Ordering Information

Additional sampling components are required for some sample types (see product insert for details).

Catalog No	Instrument Options
ASAY-ASY-0005	IT 1-2-3 SWIPE Sample Purification Kit*
ASAY-ASY-0004	IT 1-2-3 FLOW Sample Purification Kit*†
ASAY-ASY-0500	IT 1-2-3 VIBE Sample Purification Kit*
ASAY-ASY-0502	IT 1-2-3 SCOOP Sample Purification Kit
ASAY-ASY-0503	IT 1-2-3 QFLOW DNA Sample Purification Kit*
ASAY-ASY-0504	IT 1-2-3 QFLOW RNA Sample Purification Kit
ASAY-ASY-0501	IT 1-2-3 RNA Module
3800	IT 1-2-3 DNA Sample Purification Kit
ASAY-ASY-0120	IT 1-2-3 Platinum Path Sample Purification Kit

\*These purification kits require the RNA Module (ASAY-ASY-0501) for some preparation applications.  
†Large bead tube adapter (P/N PREP-ASY-0001) is required for this kit, but not included.

## IT 1-2-3™ Sample Purification Kits

Use the following table to determine the sample purification kit to be used

Sample Type	SWIPE Kit*	FLOW Kit	VIBE Kit	SCOOP Kit	QFLOW DNA Kit	QFLOW RNA Kit	Platinum Path Kit
Whole Blood DNA		◇			◇		◇
Whole Blood RNA			◇				◇
Air in PBS DNA		◇			◇		◇
Air in PBS RNA		◇				◇	◇
Nasal Swabs DNA	◇						◇
Nasal Swabs RNA			◇				◇
Surface Swabs DNA	◇						◇
Surface Swabs RNA	◇						◇
Culture DNA	◇						◇
Culture RNA	◇						◇
Powder DNA	◇						◇
Powder RNA	◇						◇
Sputum DNA			◇				◇
Sputum RNA			◇				◇
Water		◇			◇		◇
Milk		◇			◇		◇
Mixed Greens		◇			◇		◇
Ground Beef		◇			◇		◇
Tuna Salad		◇			◇		◇
Stool				◇			◇
Soil				◇			◇
Pus Swabs	◇						◇
Gastric Washing		◇			◇		◇
Lymph Node Aspirates	◇						◇
Cerebral Spinal Fluid DNA							◇
Cerebral Spinal Fluid RNA							◇
Nasopharyngeal Swab and Throat Swab RNA							◇

\*This kit is based on the original IT 1-2-3 DNA Purification Kit

The items in BioFire Diagnostics' Sample Purification Kits are controlled for export under the International Traffic in Arms Regulations (ITAR), administered by the U.S. Department of State, Directorate of Defense Trade Controls (DDTC) and may not be exported or transferred to any foreign national without prior approval of the DDTC.

The items listed in BioFire Diagnostics' Sample Purification Kits are subject to applicable laws and regulations including, without limitation, the Export Administration Act of 1979 and the Export Administration Regulations (EAR) issued by the United States Department of Commerce.

The purchase of this product includes a limited, nontransferable license, under specific claims of one or more U.S. patents as listed on BioFire Diagnostics, Inc.'s Web site (<http://www.idahotech.com/LegalNotices/>) and owned by the University of Utah Research Foundation and/or BioFire Diagnostics, Inc., to use only the enclosed amount of product according to the specified protocols. No right is conveyed, expressly, by implication, or by estoppel, to use any instrument or system under any claim of such U.S. patent(s), other than for the amount of product contained herein.