



FilmArray® Food & Water Panel Quick Guide

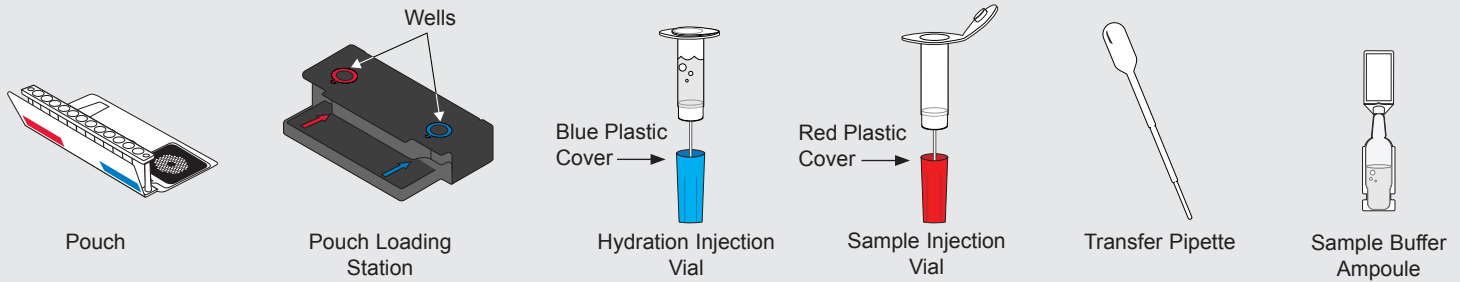
For use with FILMARRAY® 2.0 systems



Not For Diagnostic Use.

NOTE: Components from the Food & Water Panel kit should not be stored or used with any other kit.

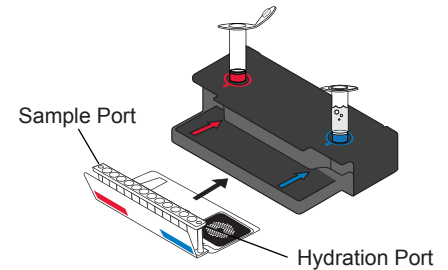
REF NGDS-ASY-0016



To avoid contamination, always wear clean gloves and work behind a protective shield.

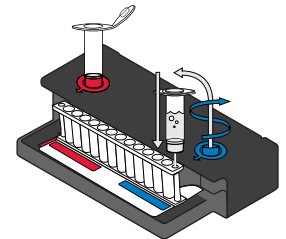
Step 1: Prepare Pouch

- Insert pouch into Pouch Loading Station.
- Place the **Sample Injection Vial** into **red well**.
- Place **Hydration Injection Vial** into **blue well**.



Step 2: Hydrate Pouch

- Unscrew **Hydration Injection Vial** from cover.
- Remove **Hydration Injection Vial**, leaving **blue plastic cover** in Pouch Loading Station.
- Insert **Hydration Injection Vial** into **Hydration Port**.
- Push down to puncture seal and wait as **Hydration Solution** is drawn into the pouch.

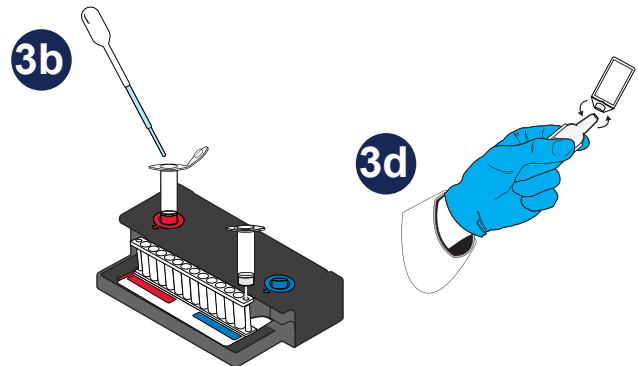


NOTE: Verify the pouch has been hydrated.

Step 3: Prepare Sample Mix

NOTE: Gently invert sample container until thoroughly mixed.

- Stomacher preparation should be completed before preceding.
- Use the Transfer Pipette to draw sample to the **2nd** line. Add the sample to **Sample Injection Vial**.



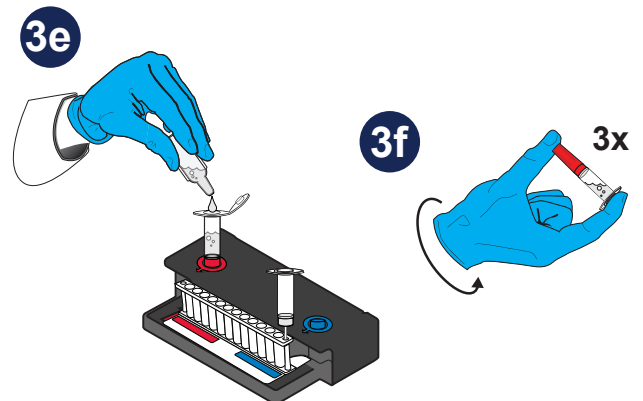
Add Sample Buffer

- Hold the Sample Buffer Ampoule with the tip facing up.

NOTE: Do not touch the tip of the ampoule.
- Gently twist off the plastic tab on the tip.
- Dispense Sample Buffer into **Sample Injection Vial** using a slow, forceful squeeze, followed by a **2nd** squeeze.

NOTE: Avoid generating excessive foaming.

- Tightly close lid and invert the **Sample Injection Vial 3 times**.
- Return **Sample Injection Vial** to **red well** of Pouch Loading Station.



WARNING: Contact with sample buffer can cause serious eye damage and skin irritation and is harmful if swallowed.





FilmArray® Food & Water Panel Quick Guide

For use with FILMARRAY® 2.0 systems

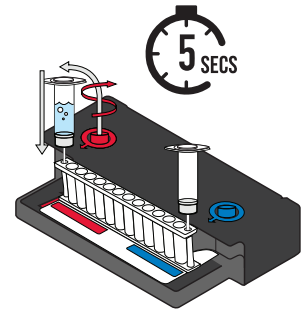


Step 4: Load Sample Mix

- Unscrew **Sample Injection Vial** from **red plastic cover**.
- Wait for **5 seconds**, then remove **Sample Injection Vial**, leaving **red plastic cover** in Pouch Loading Station.

NOTE: *Waiting five seconds decreases the contamination risk.*

- Insert **Sample Injection Vial** into **Sample Port**.
- Push down to puncture seal, then wait as sample mix is drawn into the pouch.



Step 5: Run Pouch

- Follow instructions on computer for starting a test.

Run Summary - *Displays information about the sample and a summary of the controls and test results.*

1. Run Status:

- If 'Completed', run is complete.
- If 'Incomplete', 'Aborted', or any other error message, **RETEST SAMPLE**.

2. Internal Controls:

- If 'Passed', results are valid.
- If 'Failed' or 'Invalid', **RETEST SAMPLE**.

Result Summary - *Displays the test results for each organism.*

- 'Detected': Lists names of any detected organisms.
- 'Not Detected': Lists names of organisms that were not detected.
- '∅ N/A', pathogen was not reported. Refer to Instruction Booklet for more information.

Run Details - *Displays information about the pouch, protocol, run status, operator, instrument, serial number, and lot number.*

NOTE: *If repeated 'Error' or 'Invalid' messages are obtained, contact BioFire Defense Technical Support.*

FilmArray® Food & Water Panel - Not for Diagnostic Use		BIO F I R E	
www.BioFireDefense.com			
1 Run Summary			
Sample ID: SAMPLE_01		2 Run Date: 07 May 2019	
Detected: <i>Salmonella</i>		Controls: Passed	
Result Summary			
Bacteria			
Not Detected	<i>Campylobacter</i>		
Detected	<i>Salmonella</i>		
Not Detected	<i>Vibrio</i>		
Not Detected	<i>Vibrio cholerae</i>		
Not Detected	<i>Yersinia enterocolitica</i>		
Diarrheagenic E. coli/Shigella			
Not Detected	Enteraggregative <i>E. coli</i> (EAEC)		
Not Detected	Enteropathogenic <i>E. coli</i> (EPEC)		
Not Detected	Enterotoxigenic <i>E. coli</i> (ETEC) //st		
Not Detected	Shiga-like toxin-producing <i>E. coli</i> (STEC) stx1/stx2		
∅ N/A	<i>E. coli</i> O157		
Not Detected	<i>Shigella</i> /Enteroinvasive <i>E. coli</i> (EIEC)		
Parasites			
Not Detected	<i>Cryptosporidium</i>		
Not Detected	<i>Cyclospora cayentanensis</i>		
Not Detected	<i>Giardia lamblia</i>		
Viruses			
Not Detected	Norovirus GI/GII		
Run Details			
Pouch: F&W Panel v1.0		Protocol: Food & Water v1.0	
Run Status: Completed		Operator: Dan S Van (DVan)	
Serial No.: 03587746		Instrument: FA2132	
Lot No.: 236515			



BIOFIRE
DEFENSE
A bioMérieux Company