



BioFire® Global Fever Special Pathogens Panel Quick Guide

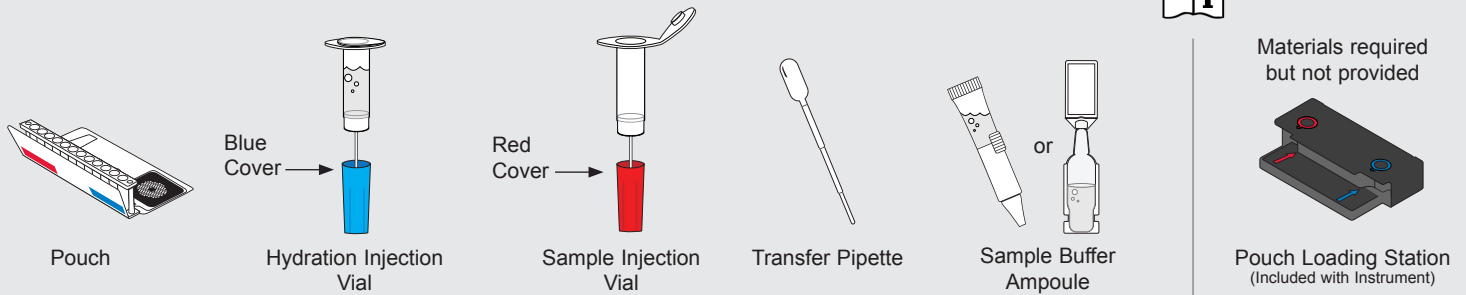
For use with BIOFIRE® FILMARRAY® Systems



For In Vitro Diagnostic Use

NOTE: Components from this kit should not be stored or used with any other kit.

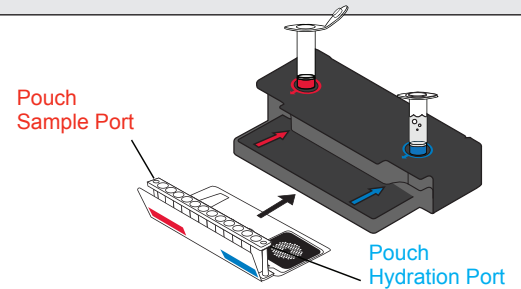
REF DFA2-ASY-0018 IVD
Rx Only



To avoid contamination, always wear clean gloves and work behind a protective shield.

Step 1: Prepare Pouch

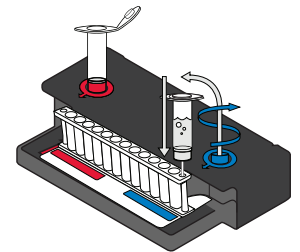
- Insert pouch into Pouch Loading Station.
- Place **Sample Injection Vial** into **red well**.
- Place **Hydration Injection Vial** into **blue well**.



Step 2: Hydrate Pouch

- Unscrew **Hydration Injection Vial** from cover.
- Remove **Hydration Injection Vial**, leaving **blue cover** in Pouch Loading Station.
- Insert **Hydration Injection Vial** into **hydration port**.
- Push down to puncture seal and wait as **Hydration Solution** is drawn into the pouch.

NOTE: Verify the pouch has been hydrated.



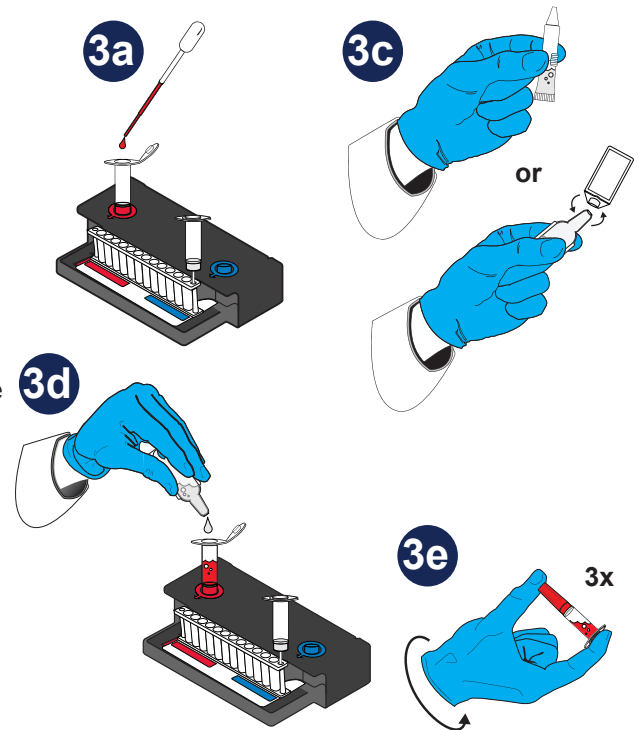
Step 3: Prepare Sample Mix

NOTE: Gently invert whole blood sample container until thoroughly mixed.

- Use the Transfer Pipette to draw sample to the **2nd** line. Add the sample to **Sample Injection Vial**.

Add Sample Buffer (NOTE: There are 2 possible designs of the Sample Buffer Ampoule)

- Hold the Sample Buffer Ampoule with the tip facing up. **NOTE: Do not touch the tip of the ampoule.**
- Firmly pinch textured plastic tab on the side of the ampoule until the seal snaps **or** if there is no textured tab on the side, gently twist off the plastic tab on the tip.
- Dispense sample buffer into **Sample Injection Vial** using a slow, forceful squeeze, followed by a **2nd** squeeze. **NOTE: Avoid generating excessive foam.**
- Tightly close lid and invert the **Sample Injection Vial** **3** times.
- Return **Sample Injection Vial** to **red well** of Pouch Loading Station.



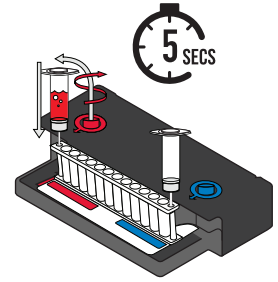
WARNING: Contact with sample buffer can cause serious eye damage and skin irritation and is harmful if swallowed.





Step 4: Load Sample Mix

- Unscrew **Sample Injection Vial** from **red cover**.
- Wait for **5 seconds**, then remove **Sample Injection Vial**, leaving **red cover** in Pouch Loading Station.
NOTE: Waiting **5 seconds** decreases the contamination risk.
- Insert **Sample Injection Vial** into **pouch sample port**.
- Push down to puncture seal, then wait as sample mix is drawn into the pouch.
NOTE: Verify the sample has been loaded.



Step 5: Run Pouch

- Screw vials back into covers in Pouch Loading Station before disposing of them in a biohazard container.
- Remove pouch from Pouch Loading Station and load into the instrument.
Optional added operator protection: Before removal from Pouch Loading Station, run a bleach wipe, a paper towel with 10% bleach (one part bleach to nine parts water), across the top of the pouch from the **pouch hydration port** to the **pouch sample port** and follow with a water wipe. This reduces the potential for contact with small amounts of sample mixed with sample buffer that may be retained in the **pouch sample port**.
- Follow instructions on computer for starting a test.
NOTE: Select the **GF Blood** protocol.

Step 6: Review Report

Refer to the *BioFire Global Fever Special Pathogens Panel Instructions for Use* for reporting information. If repeated error messages are obtained, contact *BioFire Defense Customer Technical Support*.

