

BioFire® Global Fever Special Pathogens Panel v1.0 Electronic Report Module (ERM)

Overview

The BioFire® FilmArray® Link Software and BioFire Global Fever Special Pathogens Panel v1.0 Electronic Report Module (hereafter referred to as the GF SP v1.0 ERM throughout this document) facilitates the transfer of BioFire Global Fever Special Pathogens Panel v1.0 Test results from a BioFire FilmArray System to a Laboratory Information System (LIS).

The software functions as follows:

- The BioFire FilmArray Link Software retrieves BioFire GF SP Panel v1.0 Test result data.
- The data is sent to the GF SP v1.0 ERM, where the data is formatted into an XML file (an electronic report).
- The BioFire FilmArray Link Software then sends the electronic report to the LIS.

NOTE: *The GF SP v1.0 ERM is compatible with v2.3.59.0 of the BioFire FilmArray Link Software and later versions. If users have a previous version of FilmArray Link software and need to transmit results to their LIS via HL7 (MLLP) protocol, they must download and install FilmArray Link v2.3.59.0 prior to installing and using the GF SP v1.0 ERM. See contact information for support at the bottom of this document.*

Purpose of the Document

The purpose of this document is to provide instructions for installing the GF SP v1.0 ERM on a BioFire FilmArray 2.0 System or a BioFire FilmArray Torch System.

This document also describes how BioFire Global Fever Special Pathogens Panel v1.0 Test results are reported. The reporting information can be used to map the BioFire Global Fever Special Pathogens Panel v1.0 Test results from the electronic reports to an LIS.

TECHNICAL NOTE

Installing the Electronic Report Module

The BioFire FilmArray Link Software must be installed on the BioFire FilmArray 2.0 or Torch System before installing the GF SP v1.0 ERM. This electronic reporting module will only process BioFire Global Fever Special Pathogens Panel v1.0 Test results.

Before installing:

1. Download the ERM software from the BioFire Defense website:
 - Visit the BioFire Defense FilmArray Support website at <https://www.biofiredefense.com/product-support/filmarray-support/> and then find the ERM software in the BioFire Global Fever Special Pathogens Panel drop down menu.
 - Complete the form that is displayed, and then save the installation file to the root directory on a removable drive.
2. Refer to the appropriate instructions below to install the software on a BioFire FilmArray 2.0 or Torch System.

BioFire FilmArray 2.0 System

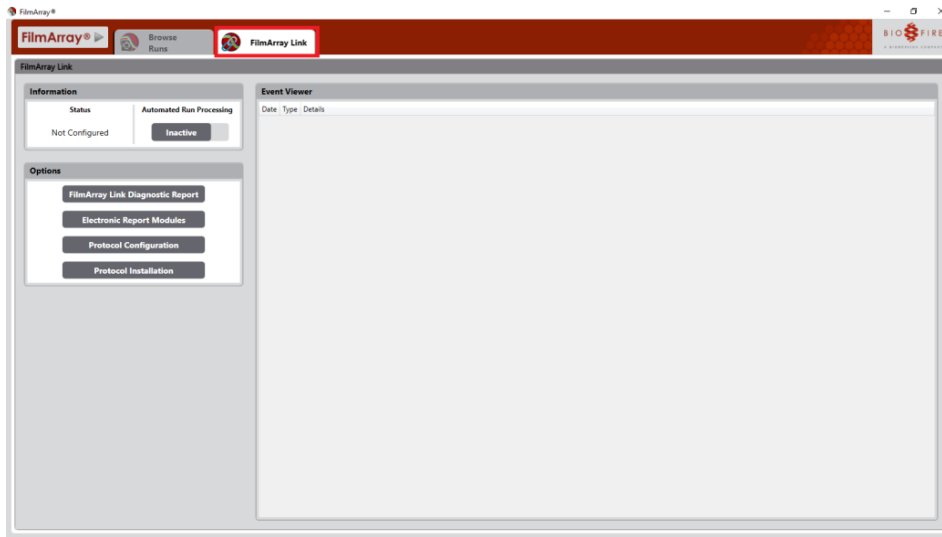
To install the GF SP v1.0 ERM on a FilmArray 2.0 System computer:

1. Insert the removable media containing the installation file into the computer.
2. Launch the software from the shortcut on the desktop.

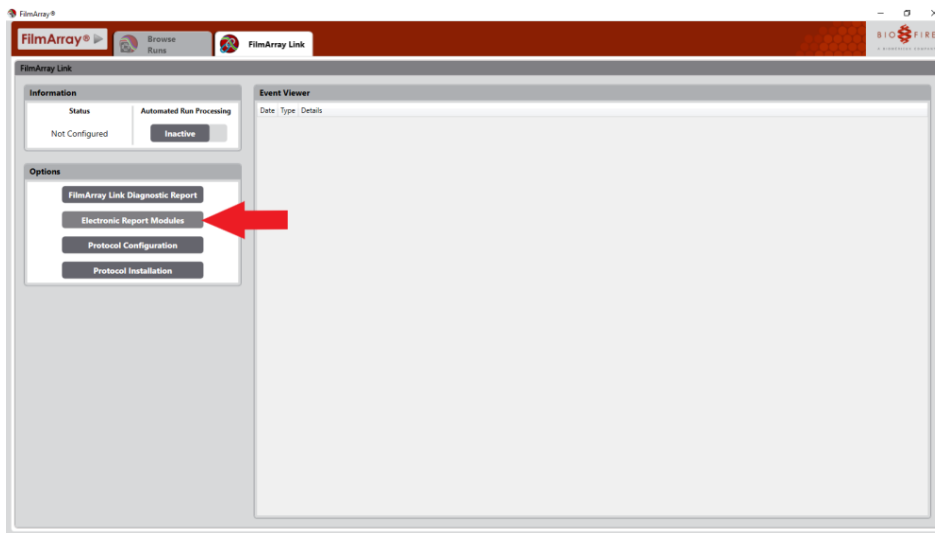


TECHNICAL NOTE

3. Click the **FilmArray Link** tab.

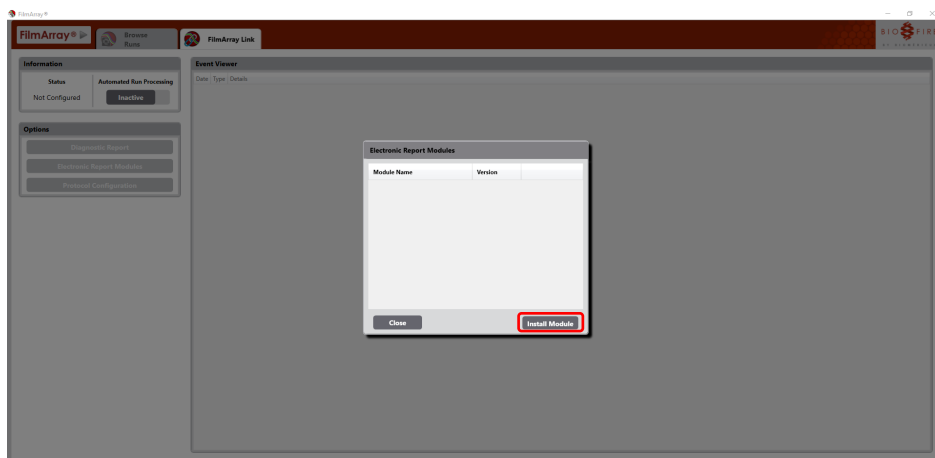


4. Click the **Electronic Report Modules** button under Options on the tab.

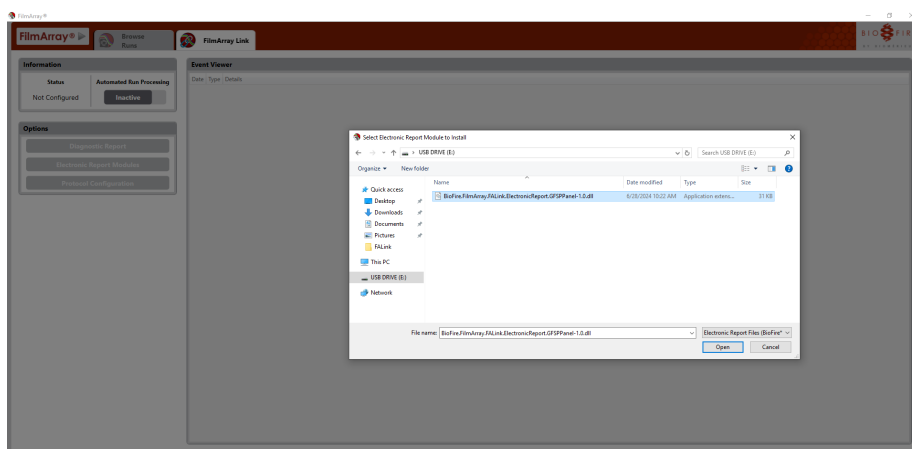


TECHNICAL NOTE

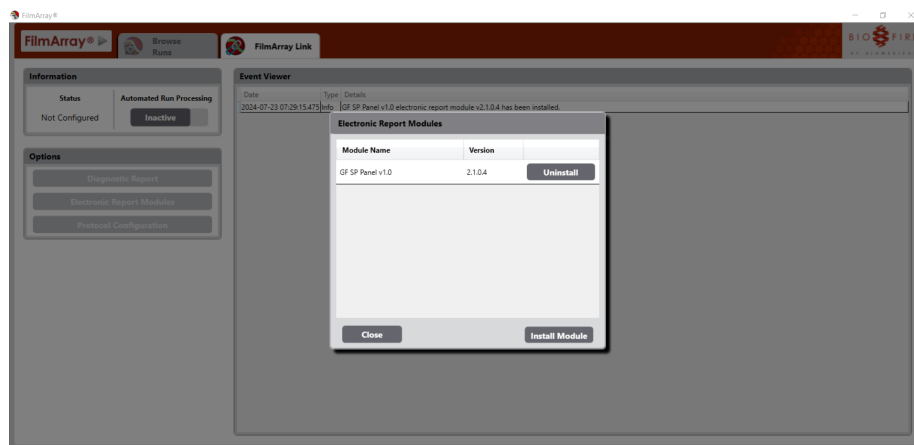
- Click the **Install Module** button in the Electronic Report Modules window.



- Navigate to the removable media drive and double-click the installation file:
BioFire.FilmArray.FALink.ElectronicReport.GFSPPanel-1.0.dll.



- When the software has been successfully installed, the module name (Global Fever Special Pathogens v1.0) and version (2.1.0.4) are displayed in the Electronic Report Module Management window.



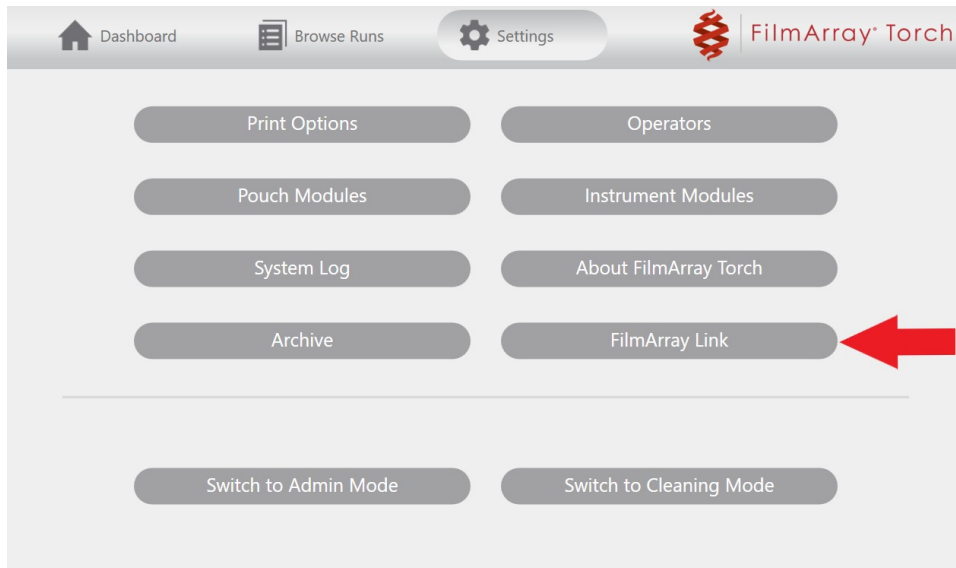
- Disconnect the removable media from the computer.

TECHNICAL NOTE

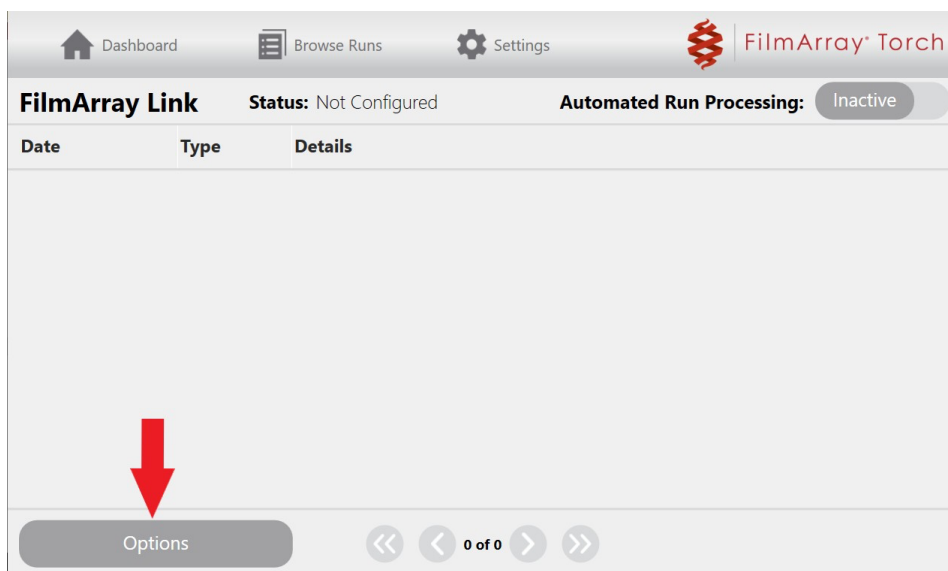
BioFire® FilmArray Torch System

To install the GF SP v1.0 ERM on a FilmArray Torch System base:

1. Connect the removable media containing the installation file into the system base.
2. Select the **FilmArray Link** option on the Settings screen.

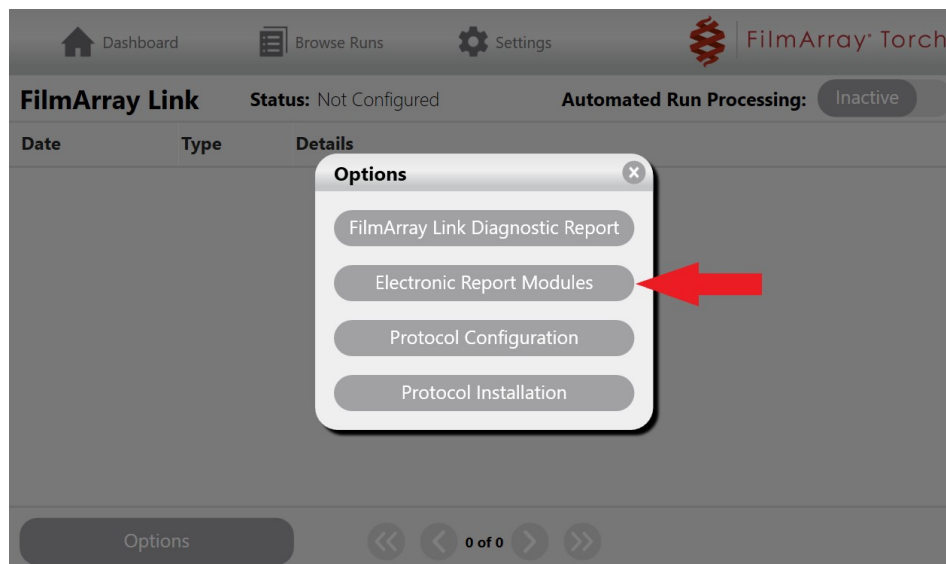


3. Select **Options** on the FilmArray Link screen and then select the **Electronic Report Modules** option.

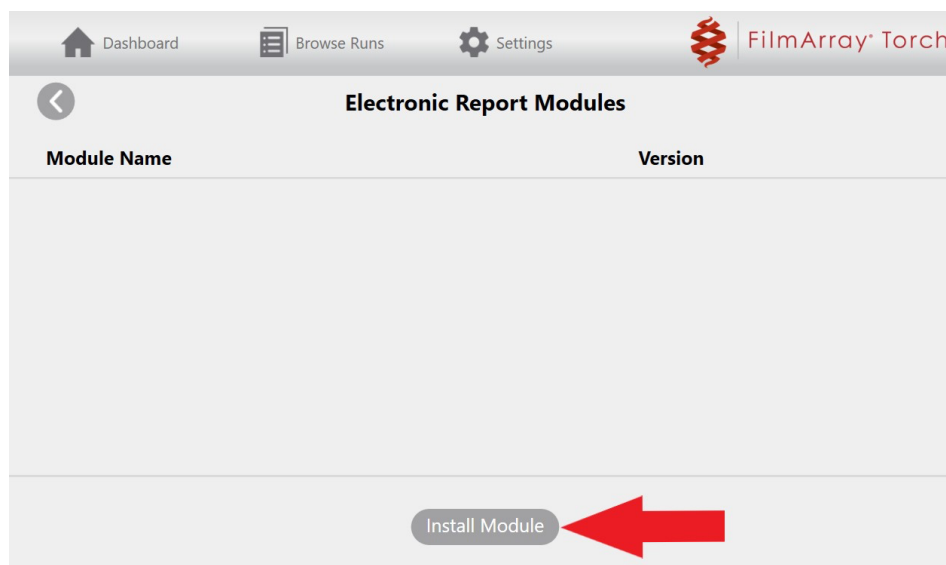


TECHNICAL NOTE

TECHNICAL NOTE



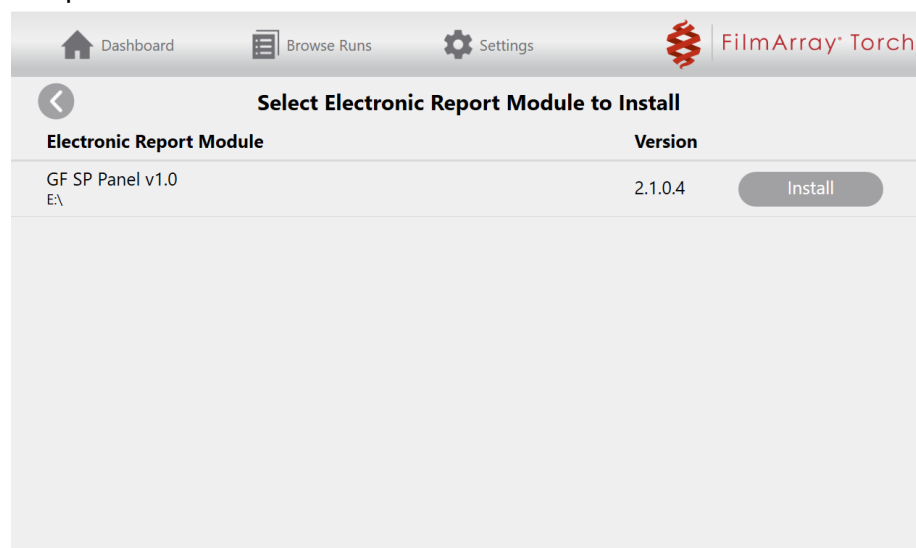
4. Select the **Install Module** option on the Electronic Report Modules screen.



5. Select the **Install** option associated with the GF SP v1.0 ERM (version 2.1.0.4).

NOTE: The software will only display installation files available in the root directory of the connected removable drive.

A list of installed modules will be displayed once the installation is complete.



6. Disconnect the removable media from the system base.

BioFire® Global Fever Special Pathogens Panel Test Results in the Electronic Report

The GF SP v1.0 ERM formats BioFire Global Fever Special Pathogens Panel v1.0 Test results into electronic reports. Each electronic report contains information from a single BioFire Global Fever Special Pathogens Panel v1.0 Test. The electronic report includes the name of the target, as well as the corresponding target code and test result.

Table 1 shows the reported target name, target code, and all possible results for the Global Fever Special Pathogens Panel v1.0 targets. Note that the reported targets will only have one of the possible results associated with it for the BioFire Global Fever Special Pathogens Panel v1.0. The targets shown in Table 1 are always reported in the electronic reports, regardless of the result.

***NOTE:** *Invalid Results are not sent to the LIS.*

TECHNICAL NOTE

****NOTE:** The Global Fever Special Pathogens Panel v1.0 ERM does not support sending Positive External Control (PEC) or Negative External Control (NEC) results to an LIS. If attempted, the ERM will send an electronic report, but results will be blank (for all protocols except HL7). Disregard blank LIS message and resend the Global Fever Special Pathogens Panel v1.0 Sample Results.

Attempting to send PEC or NEC results to an LIS via HL7 protocol may result in an error message in the FilmArray Link application interface. Disregard error message and resend the Global Fever Special Pathogens Panel v1.0 Sample Results.

Table 1. BioFire Global Fever Special Pathogens Panel v1.0 Test Result Reporting

Target Observations				
Code	Display Name	Coding System	Possible Result Number(s)	Possible Result Code(s)
GFSPx01001	Chikungunya virus	BMX	1	DETECT
			2	NOT_DETECT
GFSPx01002	Crimean-Congo hemorrhagic fever virus	BMX	1	DETECT
			2	NOT_DETECT
GFSPx01003	Dengue virus	BMX	1	DETECT
			2	NOT_DETECT
GFSPx01004	Ebola virus	BMX	1	DETECT
			2	NOT_DETECT
GFSPx01005	Lassa virus	BMX	1	DETECT
			2	NOT_DETECT
GFSPx01006	Marburgvirus	BMX	1	DETECT
			2	NOT_DETECT
GFSPx01007	West Nile virus	BMX	1	DETECT
			2	NOT_DETECT
GFSPx01008	Yellow fever virus	BMX	1	DETECT
			2	NOT_DETECT
GFSPx02001	Bacillus anthracis	BMX	1	DETECT
			2	NOT_DETECT
GFSPx02002	Francisella Tularensis	BMX	1	DETECT
			2	NOT_DETECT
GFSPx02003	Leptospira spp.	BMX	1	DETECT
			2	NOT_DETECT

GFSPx02004	Yersinia pestis	BMX	1	DETECT
			2	NOT_DETECT
GFSPx12001	Leishmania spp.	BMX	1	DETECT
			2	NOT_DETECT
GFSPx12002	Plasmodium spp.	BMX	1	DETECT
			2	NOT_DETECT
GFSPx12003	Plasmodium falciparum	BMX	1	DETECT
			2	NOT_DETECT
GFSPx12004	Plasmodium vivax/ovale	BMX	1	DETECT
			2	NOT_DETECT

TECHNICAL NOTE

Technical Support Contact Information

BioFire Defense is dedicated to providing the best customer support available. For any questions or concerns, please contact the BioFire Technical Support Team for assistance.

General Information

Email: support@biofiredefense.com

Phone: 1-801-262-3592

Fax: 1-801-447-6907

