

BioFire® Global Fever Panel v2.1 Electronic Report Module (ERM)

Overview

The BioFire® FilmArray® Link Software and BioFire® Global Fever Panel v2.1 Electronic Report Module (hereafter referred to as the GF v2.1 ERM throughout this document) facilitates the transfer of BioFire Global Fever Panel v2.1 test results from a BioFire® FilmArray® System to a Laboratory Information System (LIS).

The software functions as follows:

- The BioFire FilmArray Link Software retrieves BioFire Global Fever Panel v2.1 test result data.
- The data is sent to the GF v2.1 ERM, where the data is formatted into an XML file (an electronic report).
- The BioFire FilmArray Link Software then sends the electronic report to the LIS.

NOTE: *The GF v2.1 ERM is compatible with version v2.3.59.0 or newer of the BioFire FilmArray Link Software. If users have a previous version of BioFire FilmArray Link Software and need to transmit results to their LIS via HL7 (MLLP) protocol, they must download and install BioFire FilmArray Link Software v2.3.59.0 or newer prior to installing and using the GF v2.1 ERM. See contact information for support at the bottom of this document.*

Purpose of the Document

The purpose of this document is to provide instructions for installing the GF v2.1 ERM on a BioFire FilmArray 2.0 System or a BioFire FilmArray Torch System.

This document also describes how BioFire Global Fever v2.1 test results are reported. The reporting information can be used to map the BioFire Global Fever v2.1 test results from the electronic reports to an LIS.

TECHNICAL NOTE

Installing the Electronic Report Module

The BioFire FilmArray Link Software must be installed on the BioFire FilmArray 2.0 or BioFire Torch System before installing the GF v2.1 ERM. This electronic reporting module will only process BioFire Global Fever Panel v2.1 test results.

Before installing:

1. Download the ERM software from the BioFire Defense website:
 - Visit the BioFire Defense FilmArray Support website at <https://www.biofiredefense.com/product-support/filmarray-support/> and then find the ERM software in the BioFire Global Fever Panel drop down menu.
 - Complete the form that is displayed, and then save the installation file to the root directory on a removable drive.
2. Refer to the appropriate instructions below to install the software on a BioFire FilmArray 2.0 or Torch System.

BioFire FilmArray 2.0 System

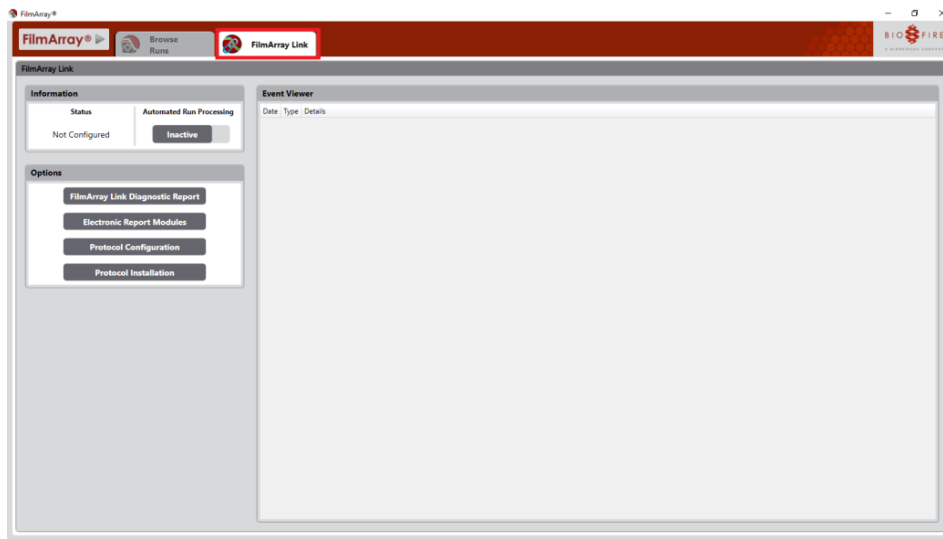
To install the GF v2.1 ERM on a FilmArray 2.0 System computer:

1. Insert the removable media containing the installation file into the computer.
2. Launch the software from the shortcut on the desktop.

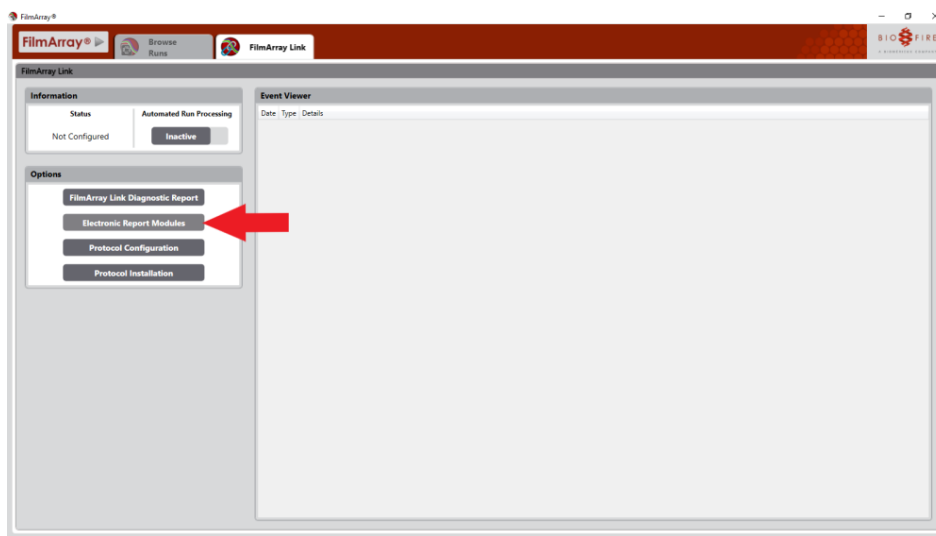


TECHNICAL NOTE

3. Click the **FilmArray Link** tab.

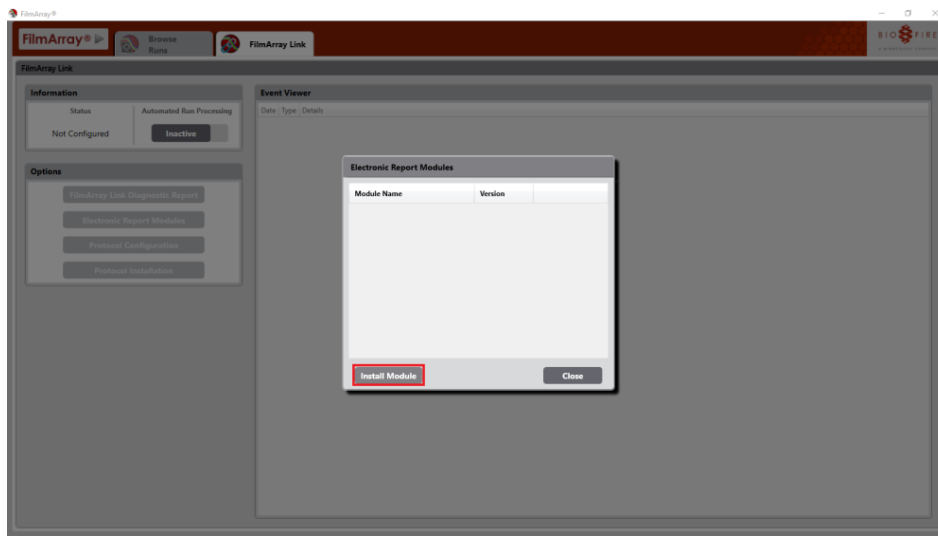


4. Click the **Electronic Report Modules** button under Options on the tab.

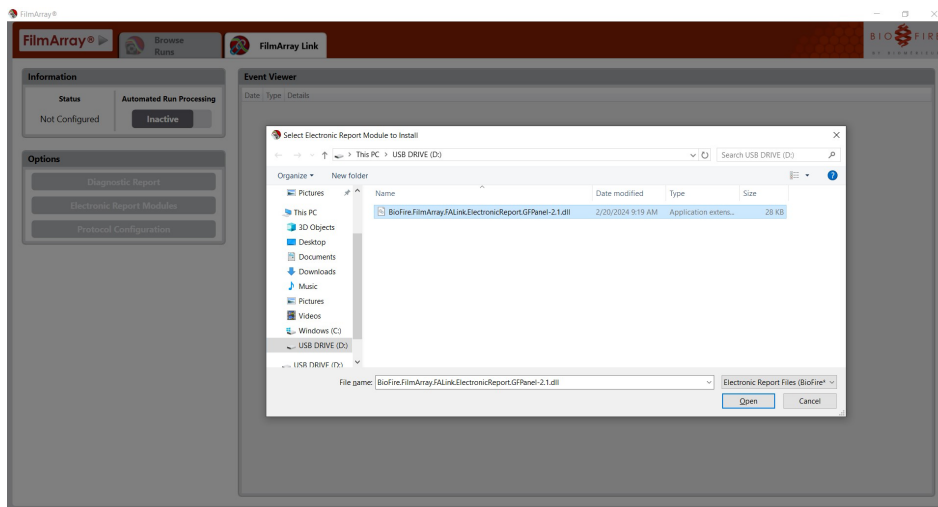


TECHNICAL NOTE

- Click the **Install Module** button in the Electronic Report Modules window.

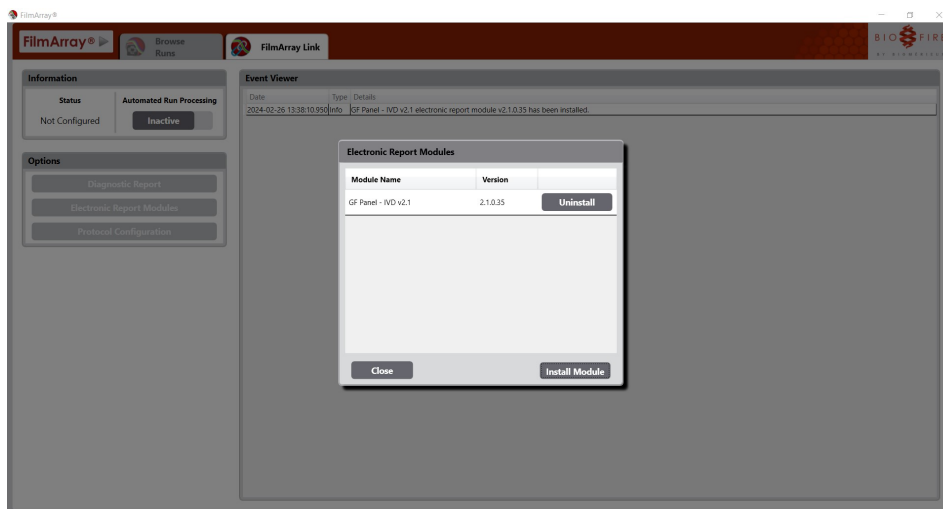


- Navigate to the removable media drive and double-click the installation file:
BioFire.FilmArray.FALink.ElectronicReport.GFPanel-2.1.dll.



TECHNICAL NOTE

- When the software has been successfully installed, the module name (Global Fever v2.1) and version (2.1.0.35) are displayed in the Electronic Report Module Management window.



- Disconnect the removable media from the computer.

TECHNICAL NOTE

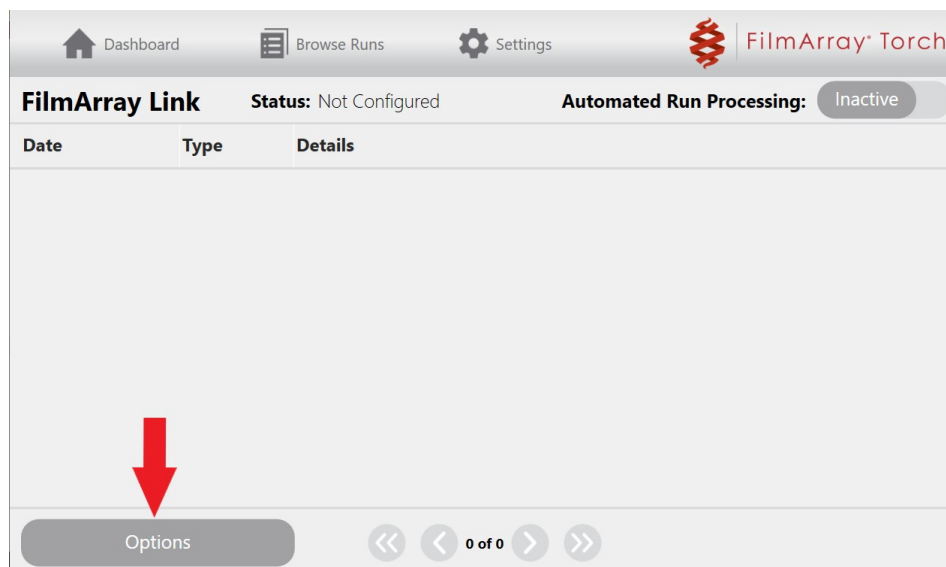
BioFire® FilmArray Torch System

To install the GF v2.1 ERM on a FilmArray Torch System base:

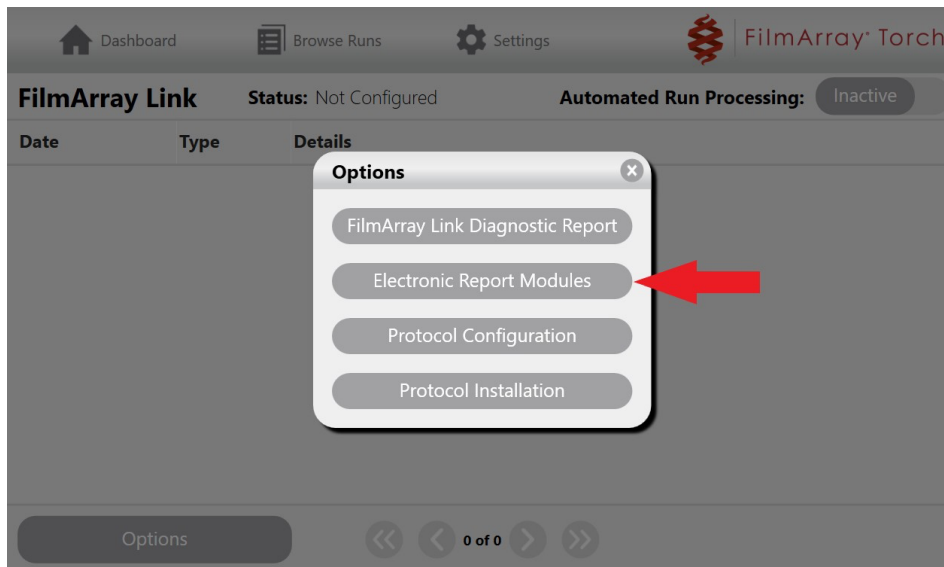
1. Connect the removable media containing the installation file into the system base.
2. Select the **FilmArray Link** option on the Settings screen.



3. Select **Options** on the FilmArray Link screen and then select the **Electronic Report Modules** option.

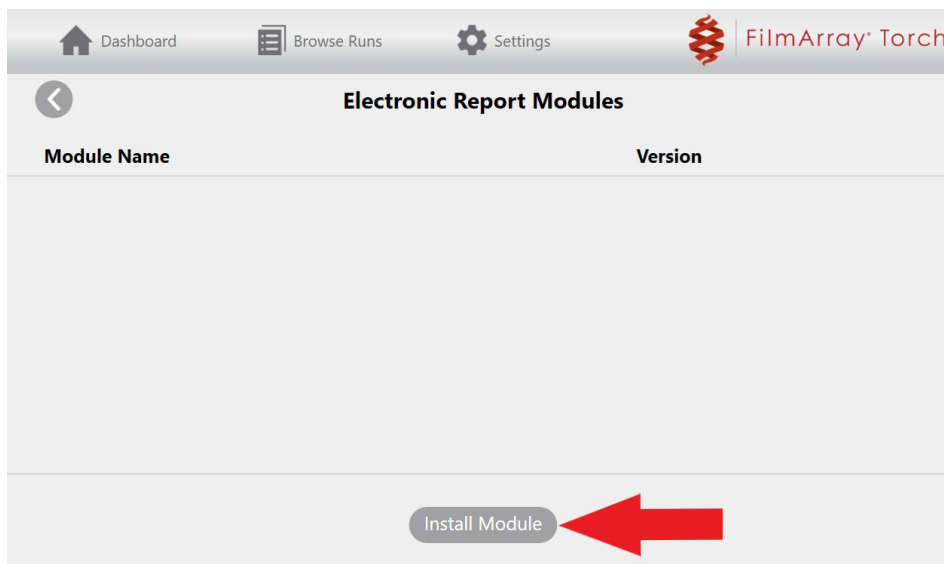


TECHNICAL NOTE



TECHNICAL NOTE

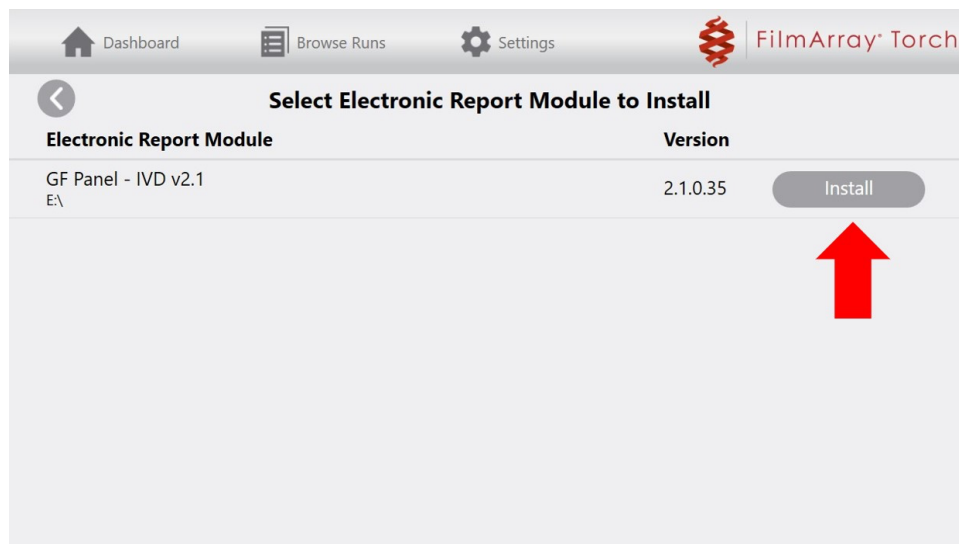
4. Select the **Install Module** option on the Electronic Report Modules screen.



5. Select the **Install** option associated with the GF v2.1 ERM (version 2.1.0.35).

NOTE: The software will only display installation files available in the root directory of the connected removable drive.

A list of installed modules will be displayed once the installation is complete.



6. Disconnect the removable media from the system base.

BioFire® Global Fever Panel Test Results in the Electronic Report

The GF v2.1 ERM formats BioFire Global Fever Panel v2.1 test results into electronic reports. Each electronic report contains information from a single BioFire Global Fever Panel v2.1 test. The electronic report includes the name of the target, as well as the corresponding target code and test result.

Table 1 shows the reported target name, target code, and all possible results for the Global Fever Panel v2.1 targets. Note that the reported targets will only have one of the possible results associated with it for the BioFire Global Fever Panel v2.1. The targets shown in Table 1 are always reported in the electronic reports, regardless of the result.

***NOTE:** Invalid Results are not sent to the LIS.

****NOTE:** The Global Fever v2.1 ERM does not support sending PEC or NEC results to an LIS. If attempted, the ERM will sent an electronic

report, but results will be blank (for all protocols except HL7). Disregard blank LIS message and resend the Global Fever v2.1 Sample Results. Attempting to send Positive External Control (PEC) or Negative External Control (NEC) results to an LIS via HL7 protocol may result in an error message in the BioFire FilmArray Link Software application interface. Disregard error message and resend the Global Fever v2.1 Sample Results.

TECHNICAL NOTE

Table 1. BioFire Global Fever v2.1 Test Result Reporting

Target Observations				
Code	Display Name	Coding System	Possible Result Number(s)	Possible Result Code(s)
GFx01001	Chikungunya virus	BMX	1	DETECT
			2	NOT_DETECT
GFx01002	Dengue virus	BMX	1	DETECT
			2	NOT_DETECT
GFx02001	Leptospira spp.	BMX	1	DETECT
			2	NOT_DETECT
GFx12001	Plasmodium spp.	BMX	1	DETECT
			2	NOT_DETECT
GFx12002	Plasmodium falciparum	BMX	1	DETECT
			2	NOT_DETECT
GFx12003	Plasmodium vivax/ovale	BMX	1	DETECT
			2	NOT_DETECT

Technical Support Contact Information

BioFire Defense is dedicated to providing the best customer support available. For any questions or concerns, please contact the BioFire Technical Support Team for assistance.

General Information

Email: support@biofiredefense.com

Phone: 1-801-262-3592

Fax: 1-801-447-6907



Technical Note

BioFire Defense, LLC
www.BioFireDefense.com